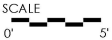
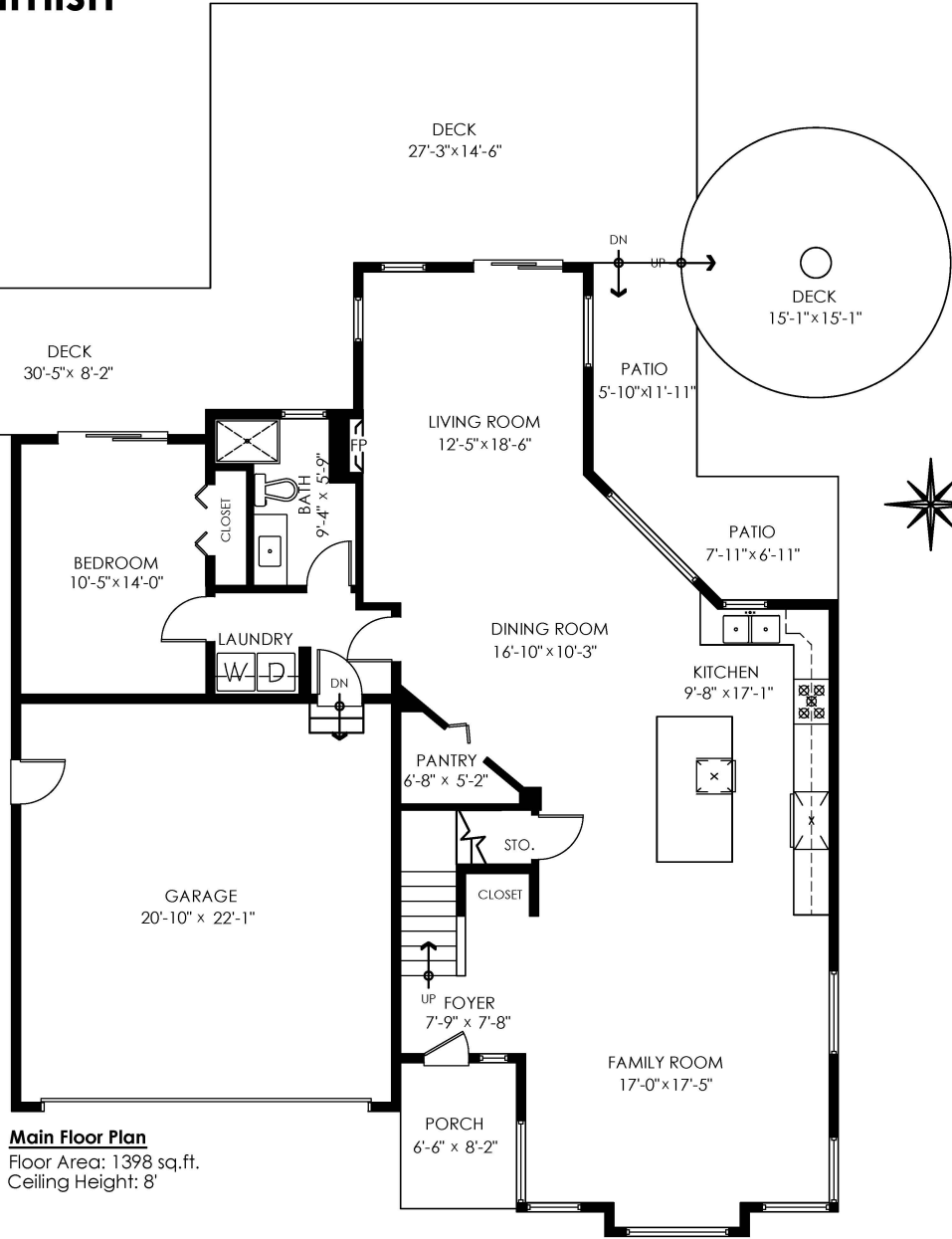
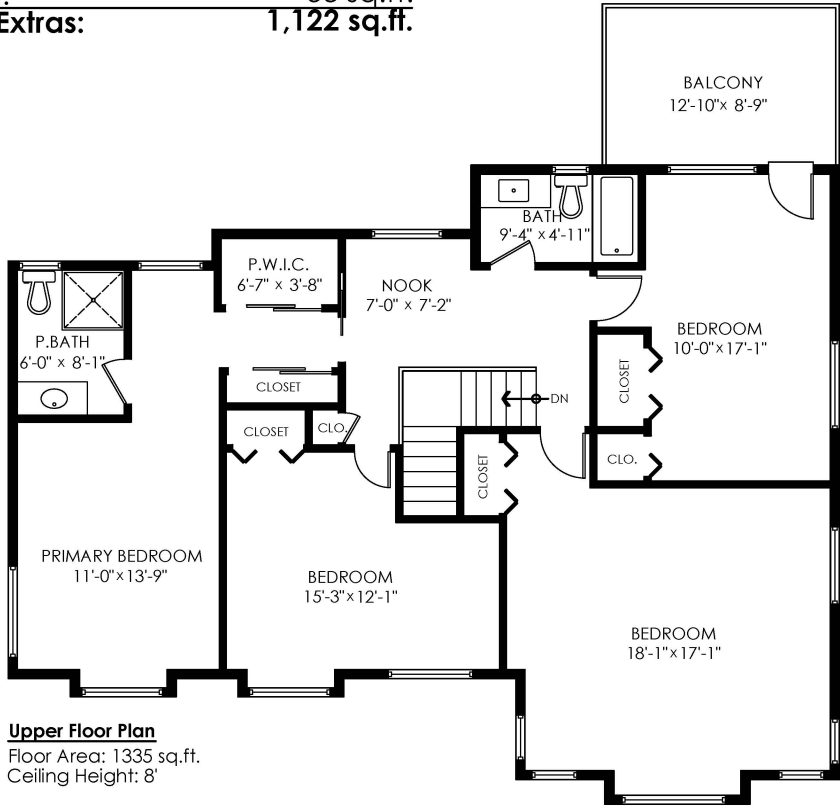


1011 Tobermory Way Squamish

Main Floor: 1,398 sq.ft.
 Upper Floor: 1,335 sq.ft.
Total Livable: 2,733 sq.ft.

Garage: 486 sq.ft.
Grand Total: 3,219 sq.ft.

Patio: 137 sq.ft.
 Decks: 820 sq.ft.
 Balcony: 112 sq.ft.
 Porch: 53 sq.ft.
Total Extras: 1,122 sq.ft.



E&O Insured. Total square foot calculated to gross unit area. SQFT based on interior measurements to exterior walls, not taken from original blueprints, may include unfinished area. This is for marketing purposes only and is not intended for architectural/construction use. All details, sizes & placements should be considered approximate within +/- 2% tolerance.

info@pixlworks.com www.pixlworks.com 604.329.5788



MEASURED ON: (2023-06-15)